



Your Bath City Conference 2016

Building the Future of Bath

This is a Free Event for the public

Doors open at 12 noon on Friday 1st July 2016
The Guildhall, Bath

Our timetable of presentations and discussions for the day are below:

12.15-13.00 The Council Chamber:

An update will be provided by The Recreation Ground Trust

From 12.00 The Kaposvar Room:

Sustainability Research from The Bath Universities Green Group

12.15-13.45 The Brunswick Room:

Feedback on the recent Bath Access and Mobility Consultation

13.00-14.30 The Council Chamber:

Our vision for general practice: How can GP surgeries work in partnership to transform health care in your community?

14.00-15.15 The Brunswick Room

The Alzheimer's Society discusses 'Living with Dementia in Bath'

15.00-16.30 The Council Chamber

Community and Council supported activities that play a part in creating a more environmentally sustainable district

18.00-19.30 The Council Chamber

Questions from the people of Bath to 'Ask The Panel'
Hosted by Somer Valley FM's Dom Chambers
and webcast on the B&NES Council website



Councillor Tim Warren
Leader of Bath & North East
Somerset Council



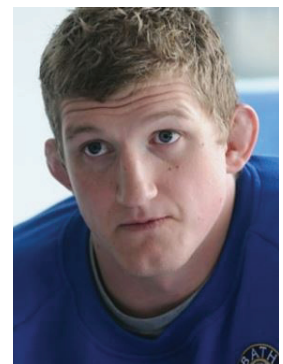
Sue Mountstevens
Avon & Somerset Police &
Crime Commissioner



Ben Howlett
Member of Parliament
for Bath



Caroline Kay
Chief Executive
Bath Preservation Trust



Stuart Hooper
Captain of Bath Rugby
(2011 - 2016)

The Guildhall's Banqueting Room will be hosting organisations from the City who will on hand to talk with you between 12-5pm

Curo will be present to discuss Care and support services & The Mulberry Park Development

Hanover Housing is one of England's largest providers of housing for people in later life

Regeneration Projects in Bath Quays (North and South) and Bath Quays Bridge

Bathscape Revitalising our Landscape for People, Communities and Heritage

The City of Bath World Heritage Site

The Cleveland Pools - the country's only surviving Georgian lido

Find out more information on the Archway Project in Bath

Information on the B&NES Water Space Project

Bath Preservation Trust is a charitable organisation with a remit for the protection and enhancement of Bath's built heritage.

Bath Tourism Plus - how they support the City

Find out more about these Bath organisations:

London Road Partnership ❖ Medical Museum

The Jewish Cemetery ❖ Friends of Kensington Meadows

Julian House are a provider of accommodation and support services for socially excluded people

Our vision for general practice: How can GP surgeries work in partnership to transform health care in your community?

Bath Access and Mobility Consultation

Sirona will be on hand to explain 'Assistive Technology' that is available to help support our service users to remain independent

Alzheimer's Society, can offer advice on coping with Dementia in Bath

Bath Mind works to improve the lives of people suffering from mental health problems

Carers' Centre (Bath & North East Somerset) provide support for over 4,000 unpaid carers

Bath Swim Therapy are a community organisation and provide therapeutic swimming sessions for disabled & special needs children & their parents

The B&NES Family Information Service provides childcare and parenting information

Make a Move is a charity founded on the principles of music and movement

The B&NES Waste and recycling campaigns team within the Council, providing advice and information on recycling, reducing waste and encouraging re-use.

B&NES Public Protection - Food Safety, Environmental Protection and more

Bristol to Bath Festival of Nature Engaging people with the natural world

Small Business Focus represent member's interests to relevant government and quasi government organisations

Bath College is a people oriented organisation fundamentally concerned with skills, education and training.

The Bath Hacked group uses open data and technology to make useful things for people visiting, living, and working in Bath